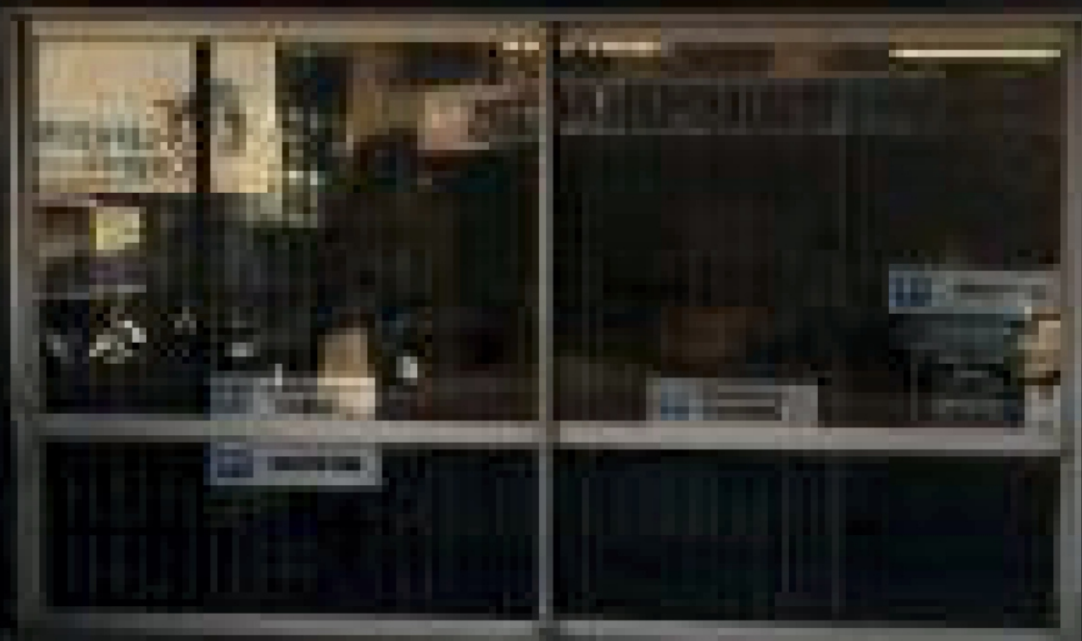


NEDWEST PANELBEATERS



YOU
SPECIALT
ALLWORK
AND A REAL
QUALITY JOBS
AND A REAL



NEDWEST PANELBEATERS

Index

About Nedwest Panelbeaters	3
Our Workshop	3
The Storeroom	4
Recovery Service	4
Our Management Team	5
Services We Offer	6
Our Contact Information	7

NEDWEST PANELBEATERS



Nedwest Panelbeaters.

Nedwest Panelbeaters has been trading as Panel Beaters and Spray Painters since 1997. Professional and friendly staff is always ready to help clients as quickly and efficiently as possible. Free quotations are done and a 36 month guarantee is given on all repairs. Our Office is adequately equipped to supply a fast and professional service with a smile to all our clients. We accept all major credit and debit cards and have free WiFi available in our reception area.

Our Workshop.

Our workshop is well equipped with the necessary tools and equipment to ensure that all work is done to the highest standards required by Insurance Companies.

Our workshop consists of the following bays:

- 5 Panel Beating Bays
- 10 Assemble Bays
- 2 Wash Bays
- 3 Delivery Bays
- 10 Paintshop Bays
- 3 Quote Bays
- 2 Inspection Bays

The Summary Of Our Equipment.

Our Workshop is adequately equipped with the following tools, machinery and equipment:

- 1 HeatedAiromax spay booth
- PPG computerized paint-mixing machines providing lifetime gaurantee on paint
- Complete dry preparation system for painting
- Wedge clamp body-measuring & Pulling system
- Korrek chassis-straightening machines
- Car-o-tronic chassis measuring & Straightening machines
- Globaljig
- Mic brazing machines
- Multipurpose spot-welderCompuspot 14000Amp
- 2-post hoists
- Hydraulic pulling systems
- Gas-welding kits
- CO² Welders
- Argon arc Tig welder (Aluminum welding)
- Spin headlight tester with optical alignment & wide angle collimator

NEDWEST PANELBEATERS



Our Workshop team is well motivated and highly qualified.

Insurance Company's and clients can be assured that repairs on vehicles adhere to the code of ethics set out by all motor vehicle Associations such as SAMBRA

Our Workshop Consists Of The Following Staff.

Summary of Personnel in the workshop:

- 3 Qualified Panelbeaters
- 3 Panelbeating assistants
- 1 Qualified Spray-Painter
- 3 Body Parts Assemblers
- 3 Paint-Shop Assistants
- 2 Wash Bay Assistants
- 1 General Cleaner

Our Labour.

Our Labour charges is **R190** per hour and paint for **R170** per hour

We have installed a IMC Armed Respond security system to provide security to all the vehicles on our premisses day and night

The Storeroom.

A manager will make sure that all personal property left in a damaged vehicle will be listed, sealed in a container and stored in a safe location under lock and key till the vehicle is repaired

Recovery Service.

We incorporate a fleet of tow trucks and 2 roll back trucks to assure that no additional damage is a cured while recovering a vehicle.

We have a 24 hour Towing Service available

NEDWEST



PANELBEATERS

The Team



Tony Goncalves
Director
Office Number: 012 327 6673
tony@nedwestpb.co.za



Kevin Goncalves
Workshop Manager
Office Number: 012 327 6673
kevin@nedwestpb.co.za



Lenny Goncalves
Workshop Manager
Office Number: 012 327 6673
lenny@nedwestpb.co.za



Jason Da Silva
Workshop Manager
Office Number: 012 327 6673
jason@nedwestpb.co.za

Services



Hail Repairs / Paintless Hail Repairs

Paintless dent repair (PDR), also known as paintless dent removal, describes a method of removing minor dents from the body of a motor vehicle. A wide range of damage can be repaired using PDR as long as the paint surface is intact. PDR may be used on both aluminum and steel panels. The most common practical use for PDR is the repair of hail damage, door dings, minor creases, large dents and bodylines damage.

The method can also be utilized to prepare a damaged panel for repainting by minimizing the use of body filler. This technique is currently known as "push to paint" or "push for paint".

~wikipedia~

Spray Painting

Spray painting is a painting technique where a device sprays a coating (paint, ink, varnish, etc.) through the air onto a surface. The most common types employ compressed gas—usually air—to atomize and direct the paint particles. Spray guns evolved from airbrushes, and the two are usually distinguished by their size and the size of the spray pattern they produce. Airbrushes are hand-held and used instead of a brush for detailed work such as photo retouching, painting nails or fine art.

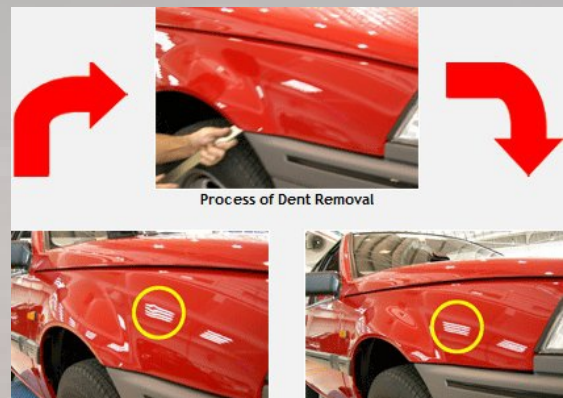


Air gun spraying uses equipment that is generally larger. It is typically used for covering large surfaces with an even coating of liquid. Spray guns can be either automated or hand-held and have interchangeable heads to allow for different spray patterns. Single color aerosol paint cans are portable and easy to store.

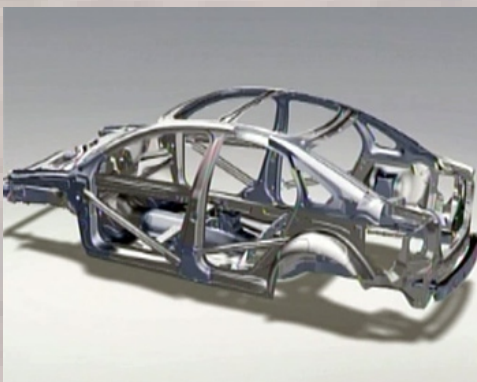
~wikipedia~

Panel Beating

A panel beater is a term used in some Commonwealth countries to describe a person who repairs vehicle bodies back to their factory state after having been damaged. They do this using many skills such as planishing as well as various other metalworking techniques, welding, use of putty fillers, and many more. Accident repair may require the panel beater to either repair or replace various parts of a vehicle. These parts may be made from various metals including various steels and alloys, many different plastics, fibreglass and others.



~wikipedia~



Chassis

An example of a chassis is the underpart of a motor vehicle, consisting of the frame (on which the body is mounted). If the running gear such as wheels and transmission, and sometimes even the driver's seat, are included, then the assembly is described as a rolling chassis.

~wikipedia~